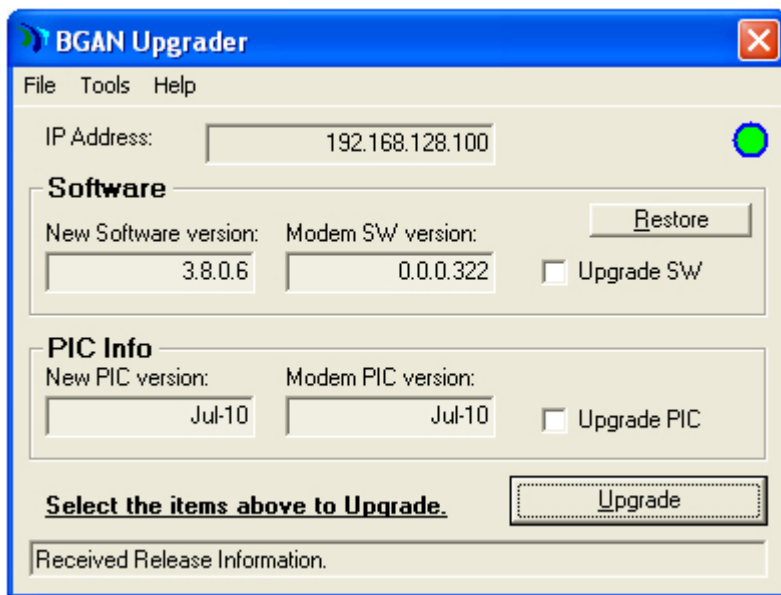


The following instructions will give guidance on how to upgrade the Software Version of a Hughes 9201 BGAN terminal.

1. Unzip the attached file [PC\\_Upgrader\\_V3.8.0.6.zip](#) and unpack the BGAN Upgrader into the "C:\BGAN\_3.8.0.6" folder on your computer.
2. Connect the Ethernet port of the BGAN modem to be upgraded to the LAN port of the computer using a standard Ethernet cable. Insert a SIM card into the BGAN modem.
3. Connect an AC/DC converter (supplied in the BGAN install kit) to the BGAN modem. Depending on the settings of the terminal, and if it does not power on automatically, press the power button to turn it on.
4. Run BGANUpgrader.exe file in the above folder.



5. On the BGAN Upgrader Window, select whether you want to upgrade SW or upgrade PIC. If the PIC version is different, you can select the check box to upgrade the PIC as well as to upgrade the SW. It is advisable to upgrade both the PIC and the SW versions if the currently installed ones are older than the new versions.

a. **During the Upgrade process, it is imperative that the power supply and Ethernet connections to the BGAN modem are not removed or interrupted.**

b. The status and progress of the Upgrade is shown at the bottom of the BGAN Upgrader window.

6. The upgrade process will proceed. Approximately after 2 minutes a window will pop-up indicating the upload is complete. The Upgrader will then reset and reconnect to the modem and retrieve the upgraded software version.

7. After ~30 seconds, the following message will appear in the window: "Received Release Information". If there is an error retrieving the software version, check the Ethernet connection and use the "Get SW Version" feature from the "Tools" menu.

8. Terminal has been successfully upgraded, and the power and Ethernet connections can be removed.

If you want to upgrade another terminal, there is no need to close the BGAN Upgrader window. Just repeat steps 2 through 8, but omit step 4.

If an earlier software upgrade was unsuccessful then the modem will power-up in a **bootrom** mode and the LEDs will show a pattern of flashing and solid red/green colours (refer to the Hughes 9201 User Manual for more details). You can also force the modem to power-up in this bootrom mode by pressing the audio button when you power-up the modem. The Upgrader can still be used to re-upgrade the

modem in this bootrom mode. However, in bootrom mode DHCP is not supported and you must set your computer's IP address to a static address of 192.168.128.101.